



ANNUAL REPORT

2020-2021



**BAIF INSTITUTE FOR SUSTAINABLE
LIVELIHOODS AND DEVELOPMENT
(BISLD) ODISHA**



Committed to Sustainable Rural Development.....

BAIF GROUP

BAIF Development Research Foundation (BAIF) – Trust under Bombay Public Trusts Act, 1950. Founded in 1967 by Dr. Manibhai Desai.

BAIF Institute for Sustainable Livelihoods and Development (BISLD) – Not for profit Company under Section 25 of Companies Act, 1956 (Section 8 of Companies Act, 2013). Established in 2012.

BAIF Agro & Bio-Technology Pvt. Ltd. (BABTPL).

Vasundhara Agri-horti Producer Company Ltd. (VAPCOL).

GOVERNANCE

BOARD OF DIRECTORS: BISLD

Mr. Girish G. Sohani <i>Managing Director</i> <i>(till 31 March 2021)</i>	Mr. Hrishikesh A. Mafatlal <i>Director</i>	Mr. Deepak C. Mehta <i>Director</i>
Mr. Kishor A. Chaukar <i>Director</i>	Mr. Sunil S. Lalbhai <i>Director</i>	Mr. Sharad P. Upasani <i>Additional Director</i>
Mr. Jagmohan Lal Bajaj <i>Additional Director</i>	Dr. Devendra R. Mehta <i>Additional Director</i>	Mr. Bharat K. Kakade <i>Additional Director</i> <i>(Managing Director w.e.f. 01 April 2021)</i>

Front cover photographs: (Clockwise from top left) Master Subham Behera, S/o of BAIF farmer participant Shri. Pravakar Behera of Bhadrak; Shri. Baikuntha Bhoi of Angul in his Wadi with harvest; Promotion of integrated farming system for livelihood augmentation; Ms. Sunita Majhi, D/o of Shri. Gobardhan Majhi of Nabarangpur district with project progeny.



Dr. Manibhai Desai
Founder, BAIF

BAIF is a development organization and research institution established in 1967 by late Dr. Manibhai Desai, a disciple of Mahatma Gandhi with the mission of creating opportunities of gainful self-employment for the poor rural families, especially the disadvantaged sections, ensuring sustainable livelihood, enriched environment, improved quality of life and good human values. BAIF is a non-political, secular and professionally managed organization, implementing various rural development programmes spread over 12 states in 1 lac villages. Over the last 54 years, BAIF has promoted several innovative programmes having potential to generate gainful self-employment and provide sustainable livelihoods to more than 5 million families.

BAIF is engaged in rural development activities through transfer of technologies to enhance the productivity of natural resources such as land, livestock, water and vegetation with community engagement and develop various approaches for last mile reach with family as the unit of development. BAIF has evolved a multi-activity model to provide gainful self-employment opportunities to the families living below the poverty line and to enable them to come out of poverty.

BAIF has been at the forefront in creating innovative models of sustainable development during the last 5 decades. The value of increased produce through various programmes of BAIF is over ₹15,000 crores per annum. The outcomes are directly aligned with Sustainable Development Goals.

BISLD is the field implementation division of BAIF and operates in four Regions – East (Odisha, Bihar, Jharkhand), West (Maharashtra, Gujarat, Madhya Pradesh), North (Uttar Pradesh, Rajasthan, Uttarakhand) and South (Andhra Pradesh, Telangana, Karnataka). Presently, BAIF's/BISLD's programmes are operational in partnership with Central government, State governments, multi-lateral organizations, NABARD, Corporate entities, Banks, Philanthropic organizations etc. These cover the domains of livestock development, agriculture, natural resources management, renewable energy, health, women empowerment, water, sanitation, functional literacy, skill building etc. with the objective of sustainable livelihoods. BAIF has a total strength of 6,107 employees and associates with diverse functional expertise.

Within Odisha, BAIF's activities are spread across 19 districts covering about 1 lac households with support from Govt. of Odisha and CSR partners.

To know more about our Founder and BAIF programmes, please visit www.baif.org.in

VISION, MISSION AND VALUES

VISION

“Building a self-reliant rural society assured of food security, safe drinking water, good health, gender equity, low child mortality, literacy, high moral values and clean environment”

MISSION

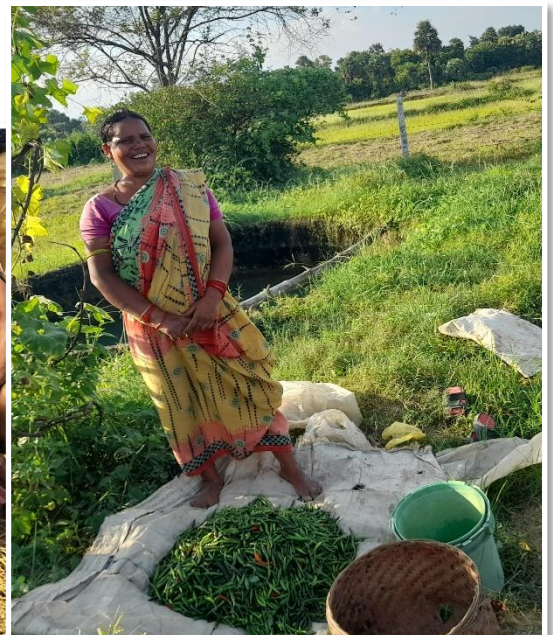
“To create opportunities of gainful self-employment for the rural families, especially disadvantaged sections, ensuring sustainable livelihood, enriched environment, improved quality of life and good human values”

CORE VALUES

*Equity | Excellence |
Participation | Sustainability |
Transparency | Well-being*



**“Augmenting Livelihoods
...Creating Vibrant Rural Economy”**



CONTENTS

**From the Desk of
Regional Director**

Page: 5

1

Journey of BAIF, Odisha

Page: 9

4

Farm Based Livelihood

Page: 22-27

4.1 Tree Based Farming

Page: 23-26

4.2 Improved Agriculture

Page: 26-27

7

Rural Non-Farm Sector

Page: 34

10

**Promotion and
Extension**

Page: 36-38

13

**Institutional
Linkages**

Page:41

Preface

Page: 6

2

Footprint

Page: 10

5

**Natural Resources
Management**

Page: 28-29

8

**BISLD Odisha
Programme Outlay**

Page: 35

11

Monitoring and Visits

Page: 38-39

14

COVID-19 Response

Page: 42-43

Projects at a Glance

Page: 7-8

3

Livestock Development

Page: 11-21

3.1 Cattle Development

Page: 12-20

3.2 Goat Development

Page: 21

3.3 Poultry Rearing

Page: 21

6

Quality of Life

Page: 30-33

9

**Partners in
Sustainable
Development**

Page: 35

12

**Events and
Highlights**

Page: 39-40

15

Human Resource

Page: 44-45

BAIF Offices and Associates
Page: 46

Appeal
Page: 47

Acknowledgements
Page: 47

Tributes
Page: 47

FROM THE DESK OF REGIONAL DIRECTOR

I have immense pleasure in presenting the progress and highlights of Odisha programmes during the year 2020 – 21.

BAIF's Odisha programmes are being implemented since 2010 and at present covers 19 districts and about 1 lac rural households. The year after facing the initial challenging months of the pandemic crisis took off to a resurgent trajectory in the latter half with the unstinting support from the sponsors and relentless efforts of the team in the enabling environment of disease control measures by the Government. While our State branch has been fortunate to avoid casualties, the contributions of pan India BAIF team members who left for their heavenly abode will be ever remembered. The untimely demise of Shri. A.K. Sinha, former Regional Director of the Eastern Region was disheartening.

Despite the intermittent disruptions, the field programmes were able to attain the desired objectives and scale new heights. We value the generous support extended by the program sponsors – Govt. of Odisha, Mahanadi Coalfields Ltd., NABARD, Adani Foundation and Bill and Melinda Gates Foundation, which resonates deeply with the noble intent of welfare of the society. The year also embarked on a new partnership with Mahindra and Mahindra Ltd. with focus on water centric livelihoods. BAIF Odisha team also assisted NDDDB and OMFED in conducting a survey on milk production – surplus in 03 districts of the State. BAIF has also been associated with SBI Foundation for its flagship Youth For India Fellowship. Institutional linkages are also pursued with Xavier University's School of Sustainability and Centurion University of Technology and Management for providing internship opportunities.

The year again achieved the highest number of Artificial Inseminations (AIs) of 1.9 lacs by BAIF in the State. The tangible outcome of the livestock programme is evident with the birth of 28,635 high genetic merit female bovine progenies during the year which serve as productive asset for the farmers with a cumulative worth of over ₹ 17 crores. The holistic programme on the other hand has succeeded in augmenting livelihood avenues from multiple vocations. The programmes aim to contribute to the Sustainable Development Goals (SDGs) of combating poverty, health, food security, sanitation, clean energy, sustainable growth, empowerment and climate change mitigation-adaptation. The resolve of doubling farmer income and enhancing living standards is reinforced by targeted outreach of the weaker sections and the un-served. Along with sustainability, renewed focus is laid on self-reliance in consonance with the Nation's mission of *Atmanirbhar Bharat*. The overall annual outlay for the State programmes was ₹ 9.5 crores.



B. Shivarudrappa
Regional Director
BISLD East Region

Capacity building initiatives adapted to the new normal of virtual and remote coverage thereby keeping intact knowledge dissemination efforts.

Along with health insurance coverage, all the members were also covered under life insurance policy to cope up with pandemic induced uncertainties and provide financial security.

The support and cooperation from all stakeholders – sponsors, partners, participants, BAIF team and associates have been of tremendous encouragement. We remain indebted and look forward to continuous support for strengthening the rural communities and economy. The valuable guidance from BAIF's senior management and well-wishers is gratefully acknowledged.

(B.Shivarudrappa)

progenies were born during the reporting period. The livestock programme received another recognition with Shri. Priyabrata Mohanty, CDC In-charge from Jagatsinghpur being felicitated for outstanding performance during BAIF Foundation Day celebration at Pune.

The year witnessed the commencement of new partnership with Mahindra & Mahindra Ltd. for implementing a water-centric livelihoods programme in Balangir. The programme follows an innovative approach of integrating the aspects of water availability, accessibility, efficiency and productive use.

The Comprehensive Community Development Programme – *Utthan* supported by Mahanadi Coalfields Ltd. commenced the implementation phase during May 2019 in 04 clusters and follows an approach of holistic community development focussing on enhanced and secured living standards through adoption of sustainable practices. 214 *Wadis* (BAIF's agri-horti-forestry model) have been established in two years on under-utilized land with initiation of inter-crop cultivation during the winter season. Off-farm enterprising activities like poultry and mushroom cultivation have been continued and expanded to cover a total of 402 families. Improved paddy cultivation was undertaken with 567 households. 1,675 households participated in undertaking improved vegetable cultivation practices. The focus is to enable addition of ₹ 1 lac to the household income through livelihood initiatives based on which the participants can expand. Health awareness activities registered an outreach of 1,300 persons though assemblies were restricted. A women group managed sanitary pad production unit has been established highlighting the importance of hygiene and also aligning with the Nation's mission of "vocal for local".

Team capacity building exercise was organized across all cadres covering various functional and self-development themes. Aligning with the new normal, virtual platforms were used extensively for capacity building and extension. BAIF's Learning Management System has been deployed for wider outreach wherein 268 persons have accessed online modules remotely.

The support from our esteemed partners and sponsors in empowering the farmers of the State through sustainable development initiatives is commendable and is gratefully acknowledged. The valuable guidance from the senior management in shaping the programmes is appreciated.



(R.K. Warriar)



R.K. Warriar, Chief Programme Executive

I take this opportunity to present the progress and highlights of Odisha programmes during the year 2020 – 21. The programmes broadly cover the domains of livestock development and holistic cluster development which further comprises various livelihood and quality of life themes. The emphasis on sustainable development is reinforced through its inclusive character with an outreach of more than 50% economically weaker sections and encouraging women participation. Programmes are spread across 19 districts of the total 30 districts in the State with yearly outreach of about 1 lac farmers.

The year began with an unprecedented crisis posed by the pandemic. The primacy of lives over livelihoods during the lockdown disrupted the development initiatives for a couple of months but the collective efforts and optimism were able to revive the growth trajectory thereafter. BAIF team adopted a three-pronged approach of relief, revival and resilience building combining short term actions and long-term strategies. 1,092 households comprising of landless, daily wagers and migrants were provided with grocery and hygiene kits with support from Mahanadi Coalfields Ltd., Hindustan Unilever and BAIF staff's voluntary contributions. Essential services and important rural development activities were undertaken uninterrupted adhering to safety protocols. With the vaccine rollout, cluster teams have been instrumental in motivating and assisting vaccination efforts.

The Integrated Livestock Development Programme (ILD) is being implemented across 16 districts through 285 Cattle Development Centres (CDCs) with the support of Govt. of Odisha. In spite of the pandemic induced disruptions, the programme has displayed commendable performance during the year owing to the relentless efforts of the team. The average monthly AI of the best performing CDC was 193. NABARD Regional Office Odisha sanctioned project for promoting the use of Sorted Semen in livestock development in 03 districts was successfully completed with encouraging response from dairy farmers. The livestock programme in the State have been emphasizing on integrated approach covering nutrition, health and management. During the year, 1.9 lacs Artificial Inseminations (AIs) were carried out recording a new annual benchmark. 57,704 genetically superior

PROJECTS AT A GLANCE

1. Integrated Livestock Development Programme (ILDP)

FOCUS: Livestock development

LOCATION: Angul, Balangir, Bargarh, Boudh, Cuttack, Ganjam, Jagatsinghpur, Jajpur, Kalahandi, Kendrapara, Koraput, Nabrangpur, Nuapada, Puri, Sambalpur, Subarnapur

SUPPORTED BY: Fisheries and Animal Resources Development Department, Govt. of Odisha

MAJOR ACTIVITIES: Bovine breeding services through a network of 285 Cattle Development Centres (CDCs) in 16 districts.



2. Comprehensive Community Development Programme – Utthan

FOCUS: Holistic cluster development

LOCATION: Angul, Jharsuguda, Sambalpur, Sundergarh

SUPPORTED BY: Mahanadi Coalfields Ltd.

MAJOR ACTIVITIES: Livelihood augmentation through livestock rearing, improved agricu

lture, value addition, water resources development, energy. Integration with quality-of-life components like health, sanitation, education, empowerment.



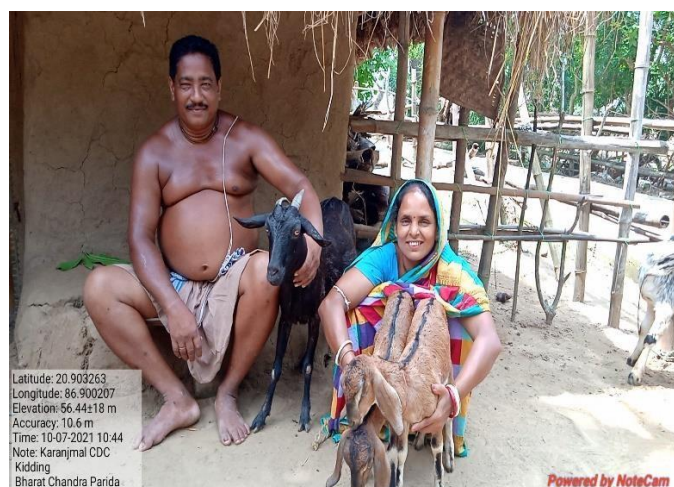
3. Livestock Development Project

FOCUS: Livestock development

LOCATION: Bhadrak

SUPPORTED BY: Adani Foundation

MAJOR ACTIVITIES: Integrated livestock development services covering breeding, nutrition, health and management



4. Promotion of Sorted Semen in Livestock Development

FOCUS: Livestock Development

LOCATION: Balangir, Jagatsinghpur, Kendrapada

SUPPORTED BY: NABARD

MAJOR ACTIVITIES: Awareness creation on benefits of use of sorted semen for enhanced herd management and productivity.



5. Jal Samruddhi

FOCUS: Water Centric Livelihoods and Holistic Rural Development

LOCATION: Balangir

SUPPORTED BY: Mahindra & Mahindra Limited

MAJOR ACTIVITIES: Integrating water resources development with use efficiency and downstream small plot high value crop cultivation.



Above projects cover the programme themes of Livestock Development, Farm Based Livelihood, Natural Resources Management, Quality of Life and Rural Non-Farm Sector which are detailed in the subsequent sections.

1. JOURNEY OF BAIF, ODISHA

With a vision to improve the livelihoods of farmers in the State, Hon'ble Chief Minister Shri. Naveen Patnaik launched the "Kalyani" programme on 02 October 2010. BAIF implemented the "Kalyani" programme during 2010 – 2018 in 14 districts with the support of Govt. of Odisha. The programme was undertaken through a network of 100 Cattle Development Centres (CDCs) and 25 Goat Development Centres (GDCs). The components included cattle breeding, goat breeding, fodder development and fodder seed production. The major achievements of the programme included the following.

1. Dairy animal breeding services through 4.49 lacs Artificial Insemination services using frozen semen have been delivered to 1.73 lacs households in 1,920 villages resulting in the birth of 66,000 high genetic merit female progenies by project end.
2. Progenies born through the programme have recorded an average milk yield of 6-7 litres with total annual milk production estimated to be over 75 million litres valued at over ₹ 150 crores.
3. 34,000 farmers, mostly women, from 25 GDCs have sustainable goatery-based livelihood with average annual earning of over ₹ 20,000 from the activity.
4. 46,000 farmers have established fodder cultivation in over 4,500 ha of land.
5. A well-developed 100 acre fodder seed farm has supplied 93 tons of high-quality fodder seeds and over 3 million cuttings of Hybrid Napier to farmers & other agencies.
6. Introduction of advanced breeding technology of Sorted Semen.

Based on the success of the "Kalyani" programme in transforming dairy farmers' livelihoods, the second phase "Integrated Livestock Development Programme" commenced in June 2018 in 16 districts. The programme has now been expanded to the coastal districts and has an overall annual outreach of more than 80,000 farmers. The programme provides scientific and quality door-step bovine breeding services for genetic improvement of dairy animals and enhanced milk production. The high milk yielding female calves born under the programme will also serve as an asset to the farmer in future. The programme is being implemented through a network of 285 CDCs in 3,460 villages covering 109 blocks in 16 districts of the State. About 2 lacs AIs are performed in a year which have resulted in the birth of over 63,000 improved female calves in the last 3 years.

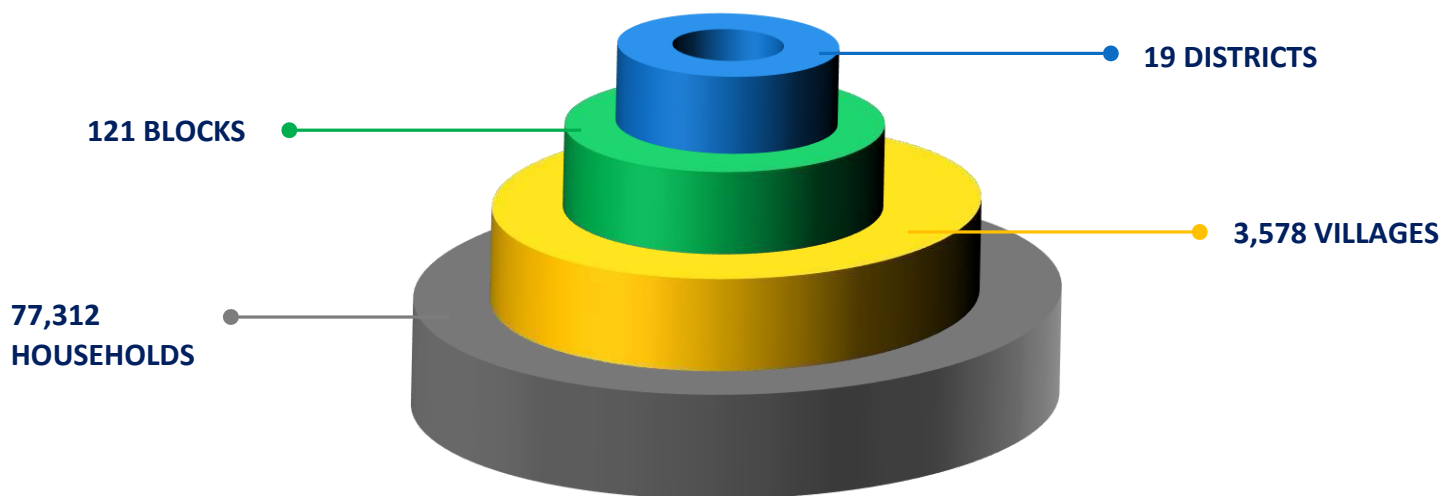
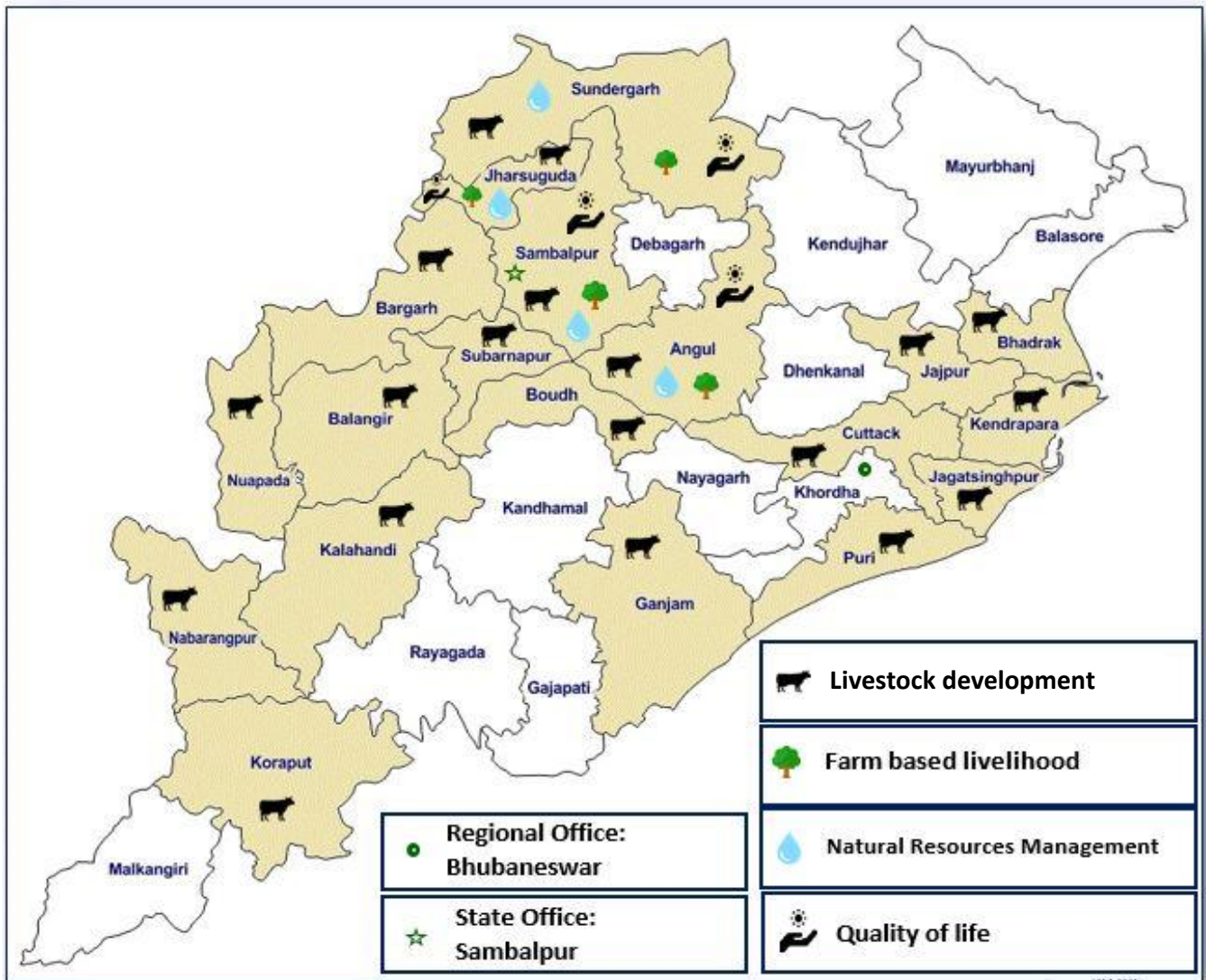
The Comprehensive Community Development Programme – *Utthan* supported by Mahanadi Coalfields Ltd. commenced the implementation phase during May 2019 and follows an approach of holistic community development focussing on enhanced and secured living standards through adoption of sustainable practices. The programme thus integrates the aspects of livelihood and quality of life across four clusters of 10 villages each in the districts of Sambalpur, Angul, Jharsuguda and Sundargarh. Various activities covering the themes of agriculture, livestock, water management, energy, health, nutrition, education etc. have been designed in the implementation plan. Initial efforts have been towards community mobilization, rapport building and awareness creation. Considering seasonal nature of many activities, implementation began with agriculture related engagements of *Wadi* (BAIF's agri-horti-forestry model of productive use of under-utilized land) and promoting package of practices for improving crop yields. Initial results have been encouraging which is leading to adoption and expansion. Appropriate and advanced technologies in livestock development and agriculture were introduced in subsequent months. Cross cutting components of health and hygiene were also disseminated in the cluster. With extensive mobilization and community participation, the programme has been able to reach out to 4,300 households over two years.

The State programme is expanding its horizon with diversification into newer thematic areas and forging new partnerships for sustainable rural development.

"Be the change that you wish to see in the world."

Mahatma Gandhi

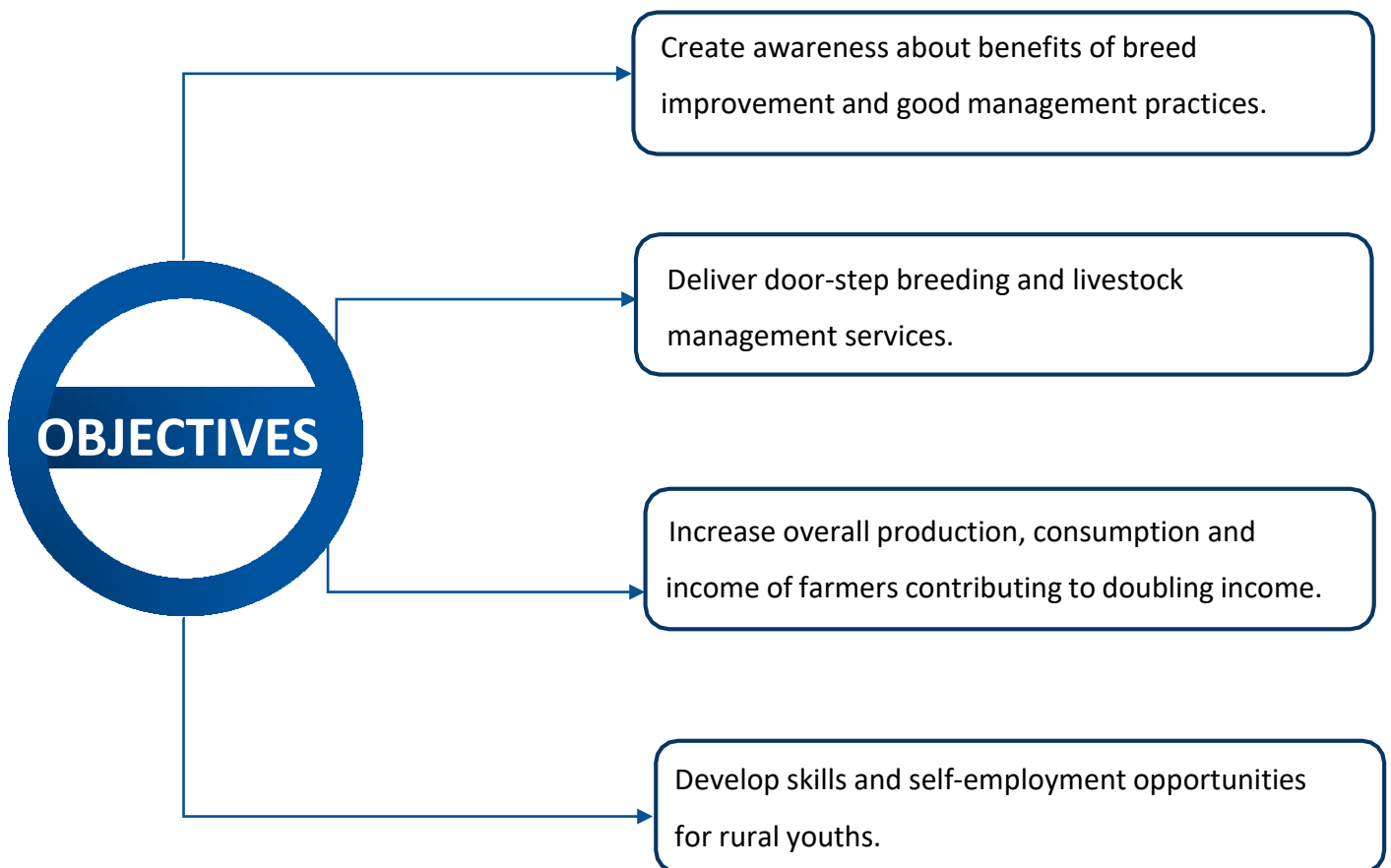
2. FOOTPRINT



3. LIVESTOCK DEVELOPMENT

SCOPE

Livestock rearing is a major source of rural household income and has been practiced as an allied vocation in concurrence to agriculture. Livestock development programme of BAIF covers large ruminants (cattle, buffalo), goats and poultry. A holistic approach of integrating different aspects of breeding, nutrition, health, management etc. is followed for augmenting income and strengthening income stream at the family level. Door-step services are provided through the network of Livestock Development Centres managed by trained para-veterinarians.



3.1 CATTLE DEVELOPMENT

KEY FIGURES

75,449

Families covered

3,578

Villages reached

295

CDCs functional

1,90,262

AIs performed

PROGRAMME COMPONENTS

(a) Door-Step Breeding Service



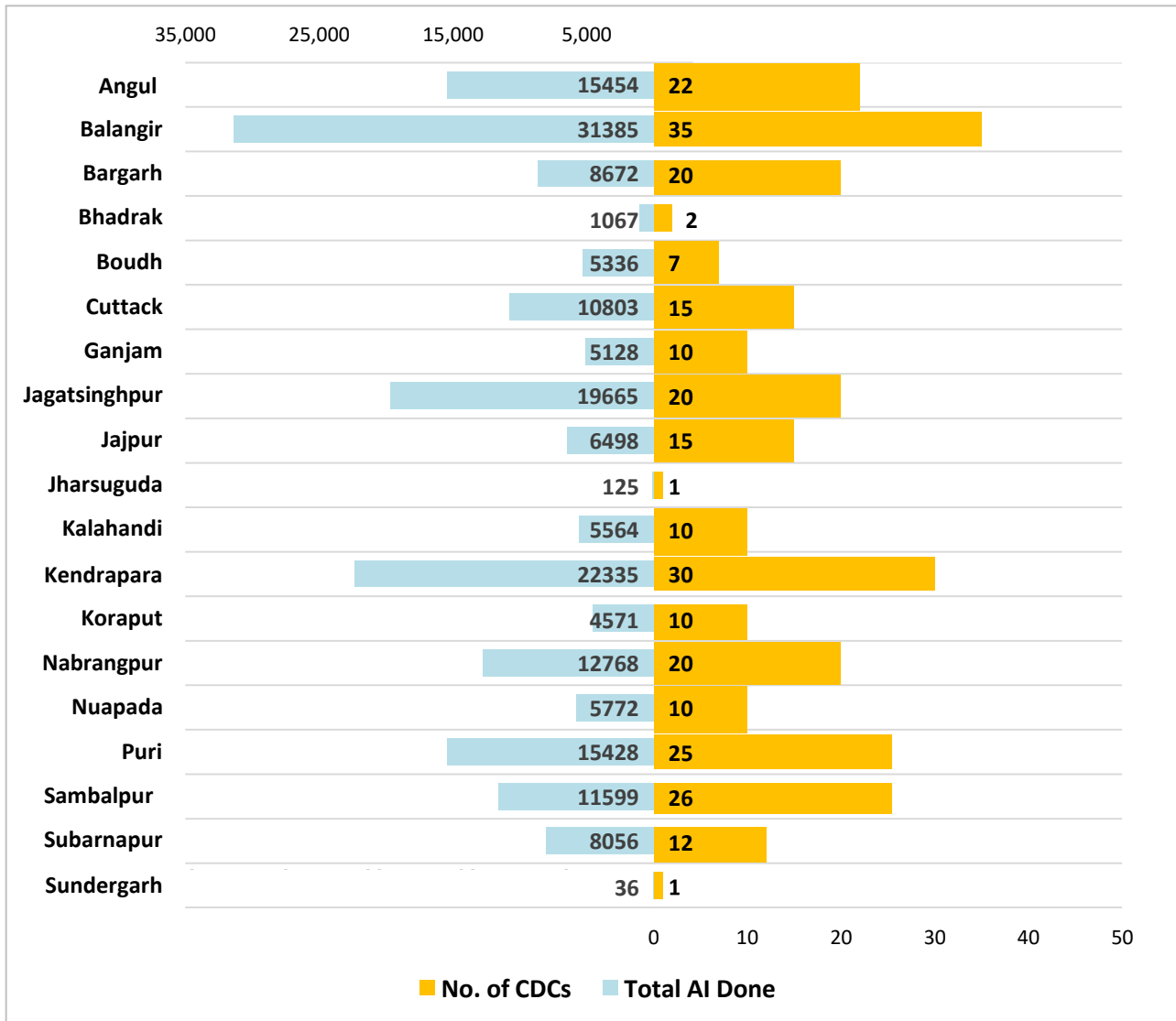
One of the major components has been to provide door-step AI services to the farmers through trained AI technicians. The focus has been to upgrade the non-descript breeds with superior dairy breeds like Jersey, Holstein Friesian and to promote indigenous breeds like *Gir*, *Sahiwal*, *Red Sindhi*, *Tharparkar* etc. in the project area. Similar services are also being provided for improving buffalo

breeds. The semen is procured from BAIF's semen station at Pune, which is a CMU (Central Monitoring Unit) 'A' graded station.

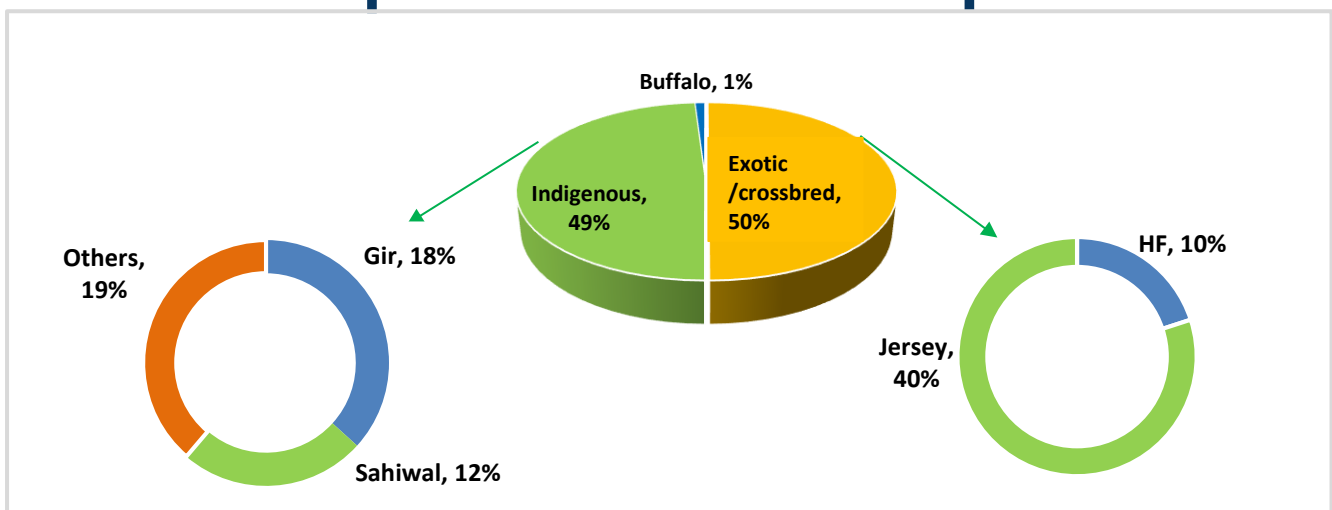
The year reported total AIs of **1.90** lacs across 295 CDCs with an average of **54** AIs per month per CDC. 22 CDCs have achieved a monthly average of more than 100 AIs, which is an encouraging trend considering the developing dairy sector in the state. **Balangir** and **Jagatsinghpur** have the distinction of achieving the highest monthly CDC average of **92** AIs. From the perspective of promoting indigenous breeds, **49%** of the total AIs covered various indigenous breeds like *Gir*, *Sahiwal*, *Red Sindhi* and *Tharparkar*. Due caution has been exercised to adhere to the State's breeding policy.

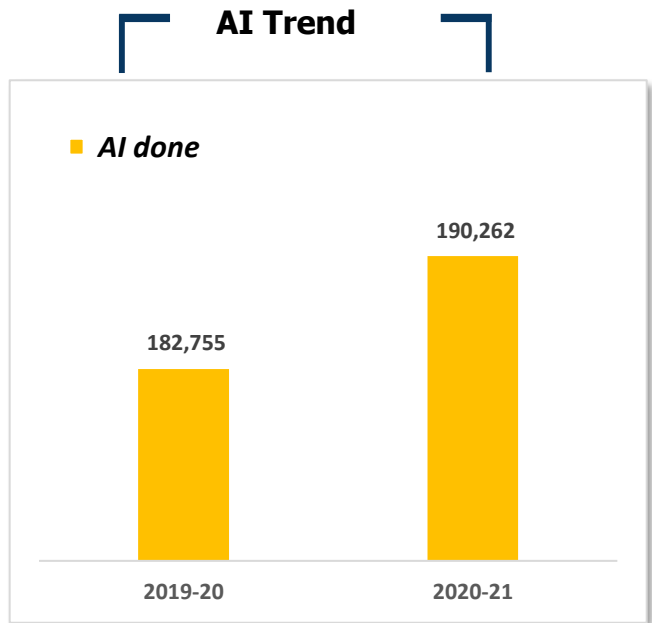
BAIF has also been actively associated with the Nationwide AI Programme – a mission mode initiative of the Government of India. This was superimposed with the ILD Programme for saturated coverage. Under NAIP-II a total of 1,02,476 AIs were performed from 1.8.2020 to 31.3.2021. Uninterrupted services were provided during the pandemic adhering to safety protocols and guidelines.

District-wise CDCs and AI progress



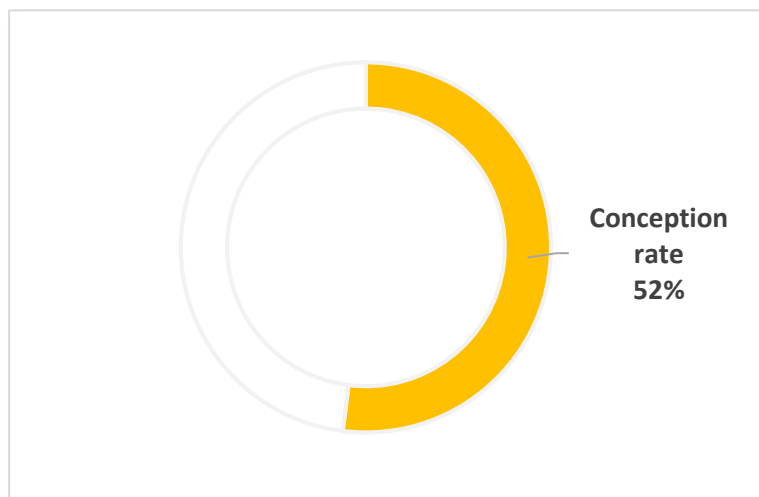
Breed-wise Insemination





(b) Follow-up and conception

During the year 2020-2021, a total of **1,86,819** animals were followed-up and out of them, **96,252** were found to have conceived, resulting in an encouraging conception rate of **52%**.



(c) Calving

During the year 2020-21, **28,635** female calves and **29,069** male calves were born. The district-wise data has been further illustrated in a table.

The system of progeny traceability has been adopted by BAIF wherein the female calves are ear-tagged using a unique coded tag. Further all calvings are recorded in geo-tagged reports which are validated at multiple levels. Calf certificates are prepared for all progenies born and given to the farmers concerned.



Latitude: 20.802118
Longitude: 83.858754
Elevation: 114.26m
Accuracy: 4.0m
Time: 26-12-2020 12:58

Geo-tagged BAIF progeny

Calf certificate and geo-tagged calving report

Integrated Livestock Development Programme											
Implemented by BAIF Development Research Foundation											
Supported by Dept. of Fisheries & Animal Resources Development, Govt. of Odisha											
Calving report											
District	Block	Tahsil	CC								
CUTTACK											
Month	Year										
	2019										
Sr.	Farmer name with surname	Aadhar No.	Village	AI date	Pedigree	Calving date	Gender (M/F)	Tag no. (12 digits)	GPS co-ordinates	Photo (with farmer & calf)	
				Sire name	Breed			Latitude	Longitude		
1	Fakira Behera		Bagdashora	8-23-2018	Kaustubh SHB	15-05-2019	M	310008229492	20.612529	85.880789	
2	Kalish Behera		Ramchandrapur	8-24-2018	Jagtap JK-100	16-05-2019	F	310008229561	20.612529	85.880789	
3	Devraj panda		Mangarapur	8-26-2018	Jagtap JK-100	16-05-2019	F	310008229561	20.601211	85.888743	
4	Nimai Charan panda		Ramchandrapur	8-30-2018	Vedant Gir	17-05-2019	F	310008229580	20.589562	85.529152	
5	Judhishir behera		Mangarapur	1-19-18	owner JK-42.5	17-05-2019	F	310008229538	20.586625	85.097948	
6	Ashok Pandey		Mangarapur	8-7-2018	Kaustubh SHB	20-05-2019	F	310008229537	20.581294	85.801785	

Integrated Livestock Development Programme
Implemented by BAIF Development Research Foundation
Supported by Dept. of Fisheries & Animal Resources Development, Govt. of Odisha

CALF CERTIFICATE

Certified the birth of calf through artificial insemination performed under the "Integrated Livestock Development Programme" with details as given below.

Name of farmer	Shri. Manoj Pradhan
Village, Block, District	Hatibari, Jajmura, Sambalpur
Name of Cattle Development Centre (CDC)	Hatibari
Date of Artificial Insemination (AI)	15/10/2018
Sire name, Breed	Rajat, J75
Date of birth	15/07/2019
Calf gender (M/F)	F
Tag number	123456789123

CDC In-charge, BAIF

Area Officer, BAIF

Block Veterinary Officer

CALVING PROGRESS IN DIFFERENT DISTRICTS

S. No	District	Male Calves	Female Calves	Total
1	Angul	2,743	2,845	5,588
2	Balangir	6,023	6,089	12,112
3	Bargarh	1,858	1,601	3,459
4	Bhadrak	94	102	196
5	Boudh	797	813	1,610
6	Cuttack	787	780	1,567
7	Ganjam	385	393	778
8	Jagatsinghpur	2,924	2,864	5,784
9	Jajpur	538	506	1,044
10	Kalahandi	1,322	1,182	2,504
11	Kendrapada	2,478	2,850	5,328

12	Koraput	461	339	800
13	Nabrangpur	1,842	1,581	3,423
14	Nuapada	744	676	1,420
15	Puri	2,222	2,160	4,382
16	Sambalpur	2,205	2,067	4,274
17	Subarnapur	1,634	1,774	3,408
18	Jharsuguda	12	15	27
19	Sundargarh	0	0	0
Total		29,069	28,635	57,704

(d) Nutrition and health

BAIF has been providing the farmers with quality feed supplements at very affordable cost to overcome the problem of mineral deficiency. The uptake was 43 tons during the year. The advantages of green fodder are well known. In view of this, BAIF has helped farmers in cultivation of improved fodder varieties with their own resources, support where available and convergence. Cultivation of 80 hectares of green fodder has been recorded during the year.

20 demonstrations of *Azolla*, which is a fern rich in protein, essential amino acids, vitamins and minerals, have also been pursued at farmer locations. Each azolla lined bed with brick border of the size 10' x 3', can cater to the requirement of 2 – 3 animals. Another technology introduced in the programme is silage making which is a good substitute for green fodder and can be used during fodder scarcity in dry months. Complete feed preparation has also been promoted for balanced nutrition.



Fodder cultivation

BAIF’s feed supplements



Azolla cultivation

(e)Sorted semen technology

This is an innovative technology pioneered in India by BAIF, which has been one of the earliest entities to set up a Sex Sorted Semen production facility for all indigenous, cross-bred and exotic breeds. Sex Sorted semen produced by BAIF ensures the birth of the desired gender (female in this case) with 90% probability.

Sorted Semen has received encouraging response from the field. During the year with the available provisions, 2,980 Sorted Semen AIs were performed. It is important to promote this advanced appropriate technology at large scale for the benefit of dairy farmers. The initial cost, which may seem to be on the higher side, is easily offset by the tangible benefits accrued.

SORTED SEMEN CONCEPTION RATE

Total AI performed	Followed-up	Confirmed Pregnancy	Conception Rate
2,980	2,950	1,460	49.4%

f. Digitalization

NEAR REAL TIME MONITORING AND REPORTING

The complete record of the Artificial Inseminations conducted in the field is entered in a mobile application-based database management system specifically developed for the purpose. It has been found to be very useful application for recording Artificial Inseminations, pregnancy diagnosis, calving etc. and also for monitoring.



GEO-TAGGING

It is a simple authentic document to collect data from field and preserve for future reference. In the field, a photograph of the cattle along with geo-location which includes latitude and longitude, is being collected. This practice helps in maintaining updated record, monitoring and verification as and when required. It also helps in avoiding data duplication of the progenies born.



Data entry for geo-tagging

“A winner is a dreamer who never gives up.” – Nelson Mandela

TRANSITION FROM SMALL SCALE FARMING TO LIVESTOCK ENTREPRENEURSHIP

Anil has been associated with BAIF since 2018 through the Govt. of Odisha supported ILD Programme. He was provided support with knowledge based (nutrition, health) & responsive support services (breeding & allied services).

The story of Shri. Anil Das exemplifies the potential of dairy farming in sustainable livelihoods. Increase in herd with optimal production is clearly a sign of intensification in farming & an indicator of success of the initiative.



Anil has been associated with BAIF since 2018 through the Govt. of Odisha supported ILD Programme. He was provided support with

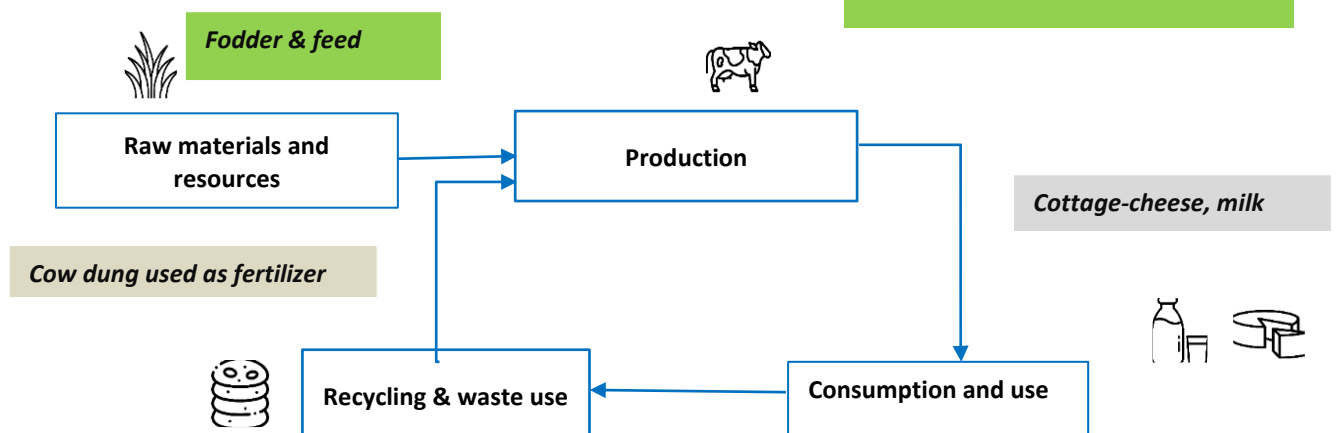
knowledge based (nutrition, health) & responsive support services (breeding & allied services).

Anil, along with his brother, has set up a sustaining milk collection network safeguarding interests of farmers. They help farmers by providing door-to-door milking services & also buy milk from them at competitive market prices.

For the brothers, daily milk procurement touches close to about 500 liters of which 200-300 liters is sold to OMFED. Rest is used to make milk by-products such as cottage-cheese. To increase economic benefits to farmers, a broader approach is welcome that targets the entire market system. Value added dairy products like cottage-cheese help add incremental value & also expands market for livestock farmers in the area.

Not only has this venture helped villagers sell milk in their village itself without having to travel long distances, it has also created a local market that ensures stable price for their produce. It acts a pathway out of poverty for many in the village with regular steady incomes.

Representative Model of Farming



PROGRAMME IMPACT

ACTIVITY



- Scientific breeding through Artificial Insemination technology in bovine animals with 1,90,262 high quality frozen semen doses of high pedigree sires.
- Use of advanced technology of breeding with sex sorted semen (2,980 doses).
- Cultivation of perennial Fodder.
- Nutritional security with balanced nutrition.

OUTPUT



- Birth of 57,704 genetically superior indigenous and cross-bred bovine progenies.
- Availability of green fodder on 80 ha.
- Provided dairy farmers with 43 MT of feed supplements.

OUTCOME*



- Increased milk production per cow to 6-8 litres per day and economic upliftment of rural households.
- Birth of 5.6 lacs progenies of high genetic merit.
- Genetic upgradation of 2.5 lacs non-descript and low yielding breeds.
- Stray/unwanted male cattle reduced by 80%
- Addition of over 20 crore litres to annual milk production.
- Outreach of 2 lacs farmers with appropriate technologies and improved practices.
- Household income of ₹ 1 lac per year from milk.

*Over 4-5 years

“The best preparation for tomorrow is doing your best today.” – Anonymous

3.2 GOAT DEVELOPMENT

Application has been submitted to the National Bureau of Animal Genetic Resources (NBAGR) for registration of “Balangir” breed of goat.

BAIF has pioneered the emerging innovative technology of scientific goat breeding through Artificial Insemination (AI). It has been at the forefront in establishing state of the art goat semen freezing laboratory for producing frozen semen doses of all major goat breeds of India. AI in goats has been piloted in

28 centers and 1,306 AIs were performed during the year. Based on conception rate and due to lack of availability of quality breeding bucks, there is encouraging adoption in the field.



3.3 POULTRY REARING

Backyard poultry is particularly suited for the landless or marginal land holding families as viable small enterprise. To obtain maximum profit from backyard poultry farming, it is advisable to introduce improved breed of poultry birds that give excellent result when raised with low inputs. Improved chicken that can be introduced in backyard poultry farming should have characteristics like adaptability, disease resistance and propagation. The model followed is that of a semi-free-range system leveraging both on ease and returns.

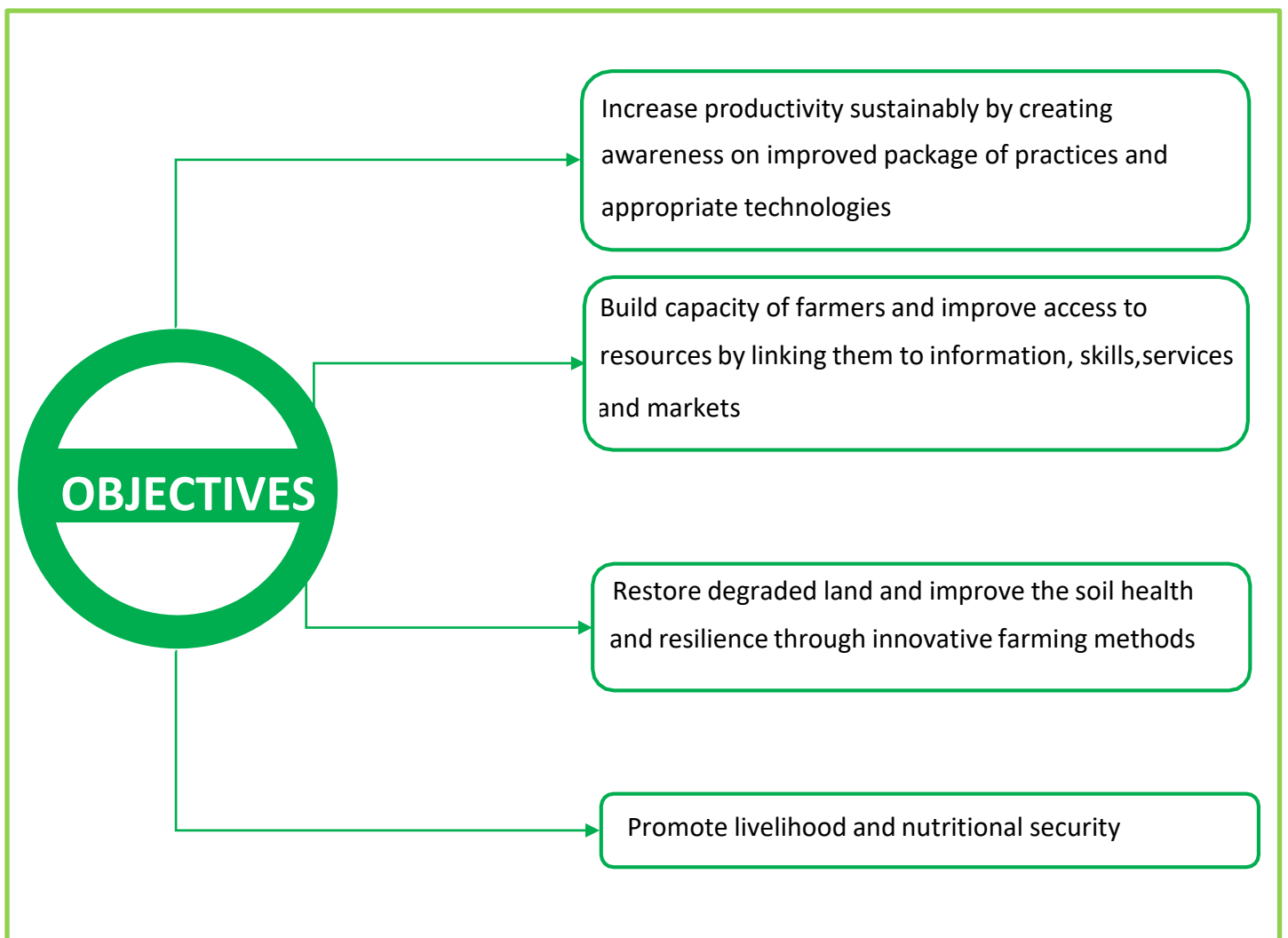


Design and specifications of the poultry house have been developed under close supervision of technical and thematic experts. 50 chicks are provided along with feed and aftercare support. The birds are of dual purpose – both for egg and meat. During the year, 174 such poultry units were established covering as many households.

4. FARM BASED LIVELIHOOD

SCOPE

Farm based livelihood encompasses the aspects of resilient and sustainable agriculture by promoting improved practices and conserving local varieties. Enhancing returns from available land resource by adopting appropriate technologies, high value crop cultivation, diversification and value addition forms the underlying highlight of this theme. Front-end linkage is integrated with the aid of off-farm and non-farm enterprise promotion.



“The greatest sin is to think yourself weak.” – Swami Vivekananda

KEY FIGURES

1,675

Families covered

40

Villages reached

214

***Wadis* established**

77 ha

Area under improved cultivation

4.1 TREE BASED FARMING

Wadi is an environmentally sustainable programme for regeneration of natural resources, especially tree cover, as one of the basic outcomes. It aims at helping the low-income families to establish agri-horti-forestry plantation to provide long-term sustainable benefits. *Wadi* establishment encompasses plantation of fruit bearing trees, forestry species and intercropping of vegetables along with soil and water conservation measures and development of suitable water resources for the plot.

Inputs and technical support have been provided to farmers in promoting food crops, vegetable crops and diversification. In addition, innovative technologies are being scouted, piloted and replicated. Under the component, underutilized land (0.5 acre in this case) is taken up for fruit plantation along with intercropping. 214 such *Wadis* are established with proper fencing till March 2021.

Intercropping is taken up in all lands which is fetching additional income while the fruit plants are growing. A combination of agriculture, horticulture and forestry species are taken for assured multiple income streams and the practice shall keep the farmers employed in non-monsoon months, reducing migration. Part contribution from participants is kept as corpus for ownership and sustainability. Annual returns of ₹50,000 are expected for 15-20 years against initial investment of ₹45,000.



“Established *Wadi* and intercropping”



"Improved farming for better livelihood"



TRANSFORMING BARREN LAND TO INCOME GENERATING ASSET

Shri. Bipin Bihari Behera, of the SC community, belongs to Basiapada village and was holding small piece of barren land in forest and hilly area of Basiapada. The village belongs to Birsingarh GP of Jujumura block of Sambalpur district; nearest town is 30 km from the village. The village depends on agriculture but income through that is limited with less-yield due to traditional practice. Other sources of income are also limited. Farmers are mostly marginalized



(SC/ST) and skill-based livelihoods are limited. BAIF introduced 'Comprehensive Community Development Programme - Utthan' with CSR support from Mahanadi Coalfields Limited, Sambalpur, in 2019. Under the project, such marginalized farmers are given support for establishment of *Wadi* plots in the villages across all clusters of the project.

Shri. Bipin Bihari Behera attended the trainings and meetings at village by CRPs and cluster teams and saw this as his golden opportunity.

Despite his age of 78 years, he dedicatedly worked hard to develop his half acre land under *Wadi*, with fencing, pits digging-filling and plantations transforming barren land into a high-density agriculture- horticulture plantation of mango, lemon, and custard apple.

Various vegetables like Tomato, Cauliflower, Carrot, Chilli are grown at the same time with project support. Plant protection and after care services are provided, all mango plants have shown encouraging growth. He has done multi cropping in his Wadi since September 2019 and has recorded income of ₹ 68,000 during this period. Due to his age, his challenges only mounted but community involvement and participation helped in developing the establishment. Part of labor is also incentivized through project support.

Totally unused land lying idle has been transformed to an income generating asset. He was felicitated by Shri. Keshav

Rao, Director (Personnel), MCL in the presence of Shri. B. Sairam, General Manager, CSR as “Best *Wadi farmer*” amongst 104 farmers.



4.2 IMPROVED AGRICULTURE



Around 90% of farmers in the project area have been practicing single cropping (paddy) in *Kharif* season. Due to lack of technical farming system support, the yield was low. A package of practices and technical support has been provided for improving the productivity of main crops of the area such as paddy. Support of improved seed varieties, balanced fertilizers, micro nutrients and knowledge transfer etc. has been provided.

Vegetable cultivation intervention support for small plots has been promoted for improving returns through cultivation of high value crops. The support in the form of diversified, nutritionally rich, improved varieties of vegetables having early maturity period, trellis for climber vegetables, micronutrient and micro irrigation has been provided. These interventions have helped the participants in increasing the area under cultivation, thus maximizing income.

610 new families participated in improved vegetable cultivation taking the total outreach in this component to 1,461 families. Integrated approach of water resources development combined with downstream high value crop cultivation is promoted in small plots of approx. 0.25 acres enabling farmers to pursue cropping in the post-monsoon season. Income from the activity ranges from ₹30,000 to ₹50,000.

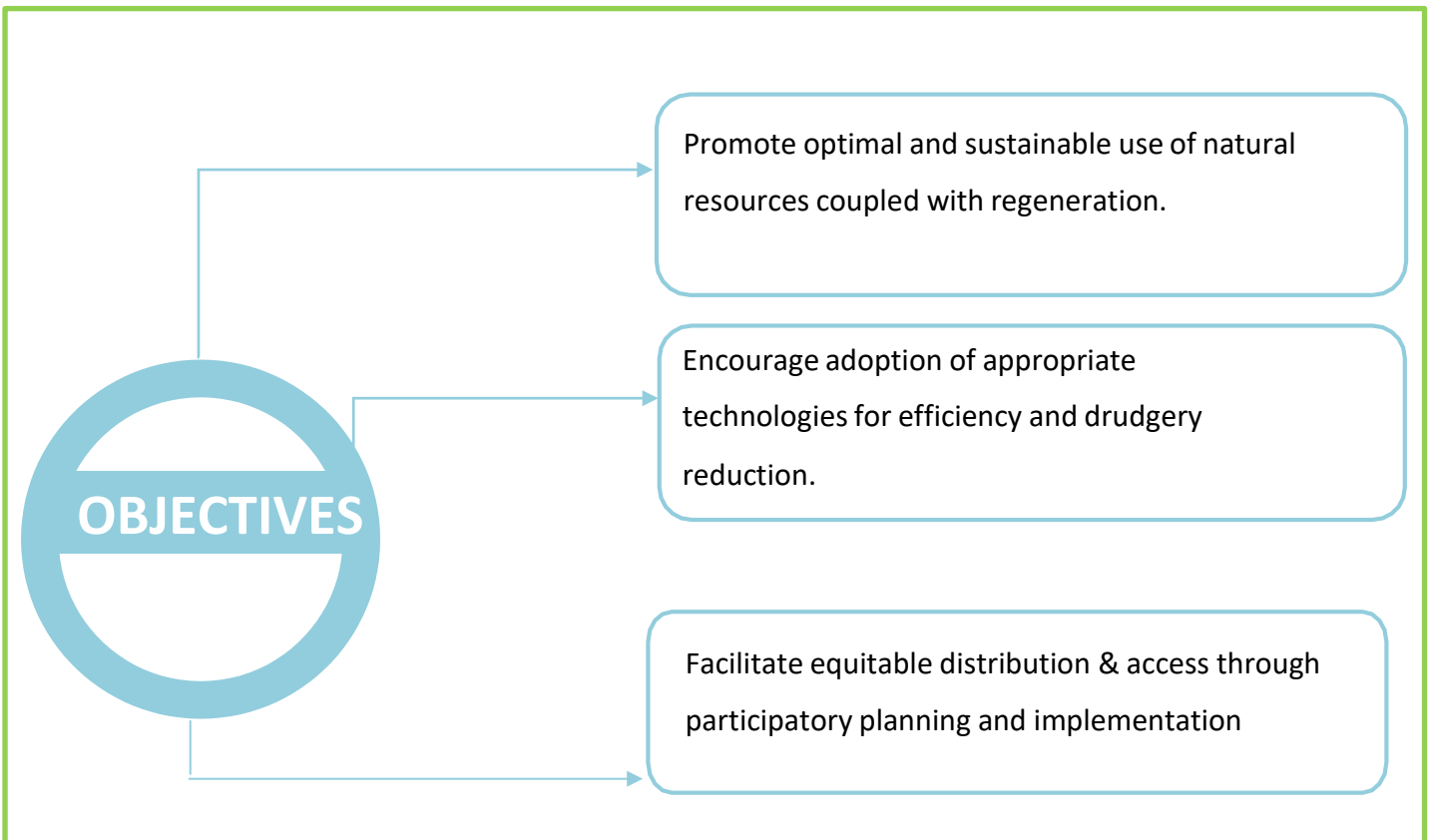
TRELLIS FARMING



5. NATURAL RESOURCES MANAGEMENT

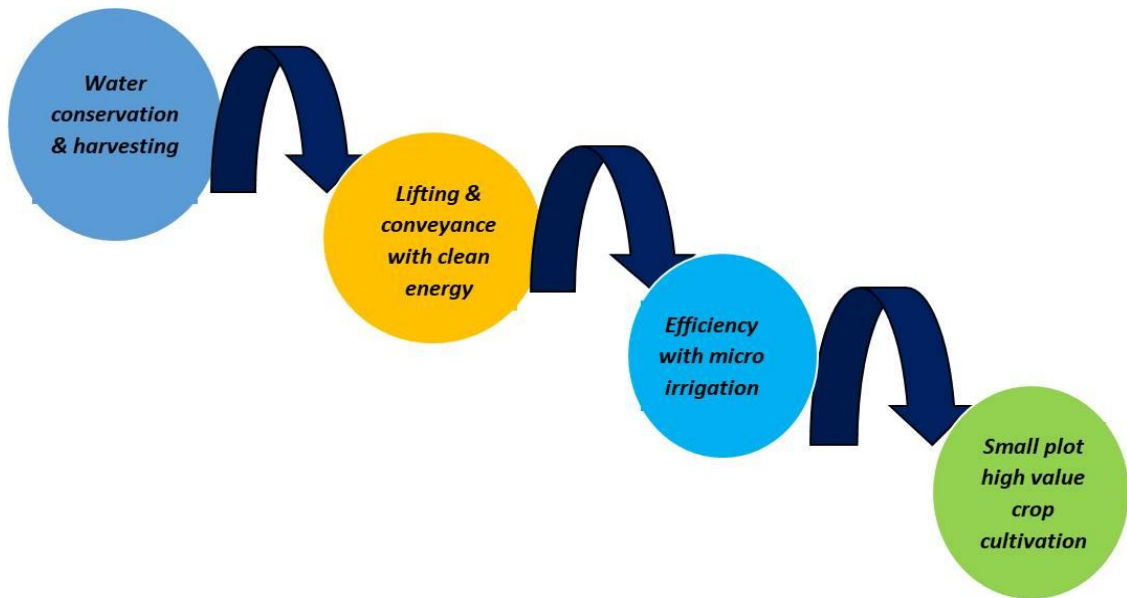
SCOPE

Natural Resources Management (NRM) focuses on conservation and regeneration of locally available resources along with promoting practices of optimal utilization and sustainable productive engagement. Sub-themes under this domain include soil conservation, water resource development, water harvesting, use efficiency, renewable energy, climate change mitigation-adaptation etc.



Emphasis is on water-energy nexus for enabling higher productivity from agriculture and allied vocations. The component follows a holistic approach of integrating availability, accessibility and use efficiency. The NRM activities are undertaken in the CCDP – *Utthan* and *Jal Samruddhi* programme clusters which face severe water scarcity in the post-monsoon period compelling the farmers to search for other livelihood sources. The activities initiated include creation of surface storage structures and effecting conveyance through solar lifting systems with further downstream adoption of micro-irrigation. During the year, water harvest potential of 5.4 million liters’ has been created thereby enabling irrigation during dry spells. Solar powered lifting systems are in the process of installation at 8 sites with a cumulative capacity of 40 hp which will benefit over 60 households with access to irrigation during *Rabi* season.

Optimal utilization and sustainability are ensured by resource sharing among water user groups. Use of clean energy will be to the tune of 35,000 kWh annually with these installations.



Solution for sustainable access to water



Existing condition

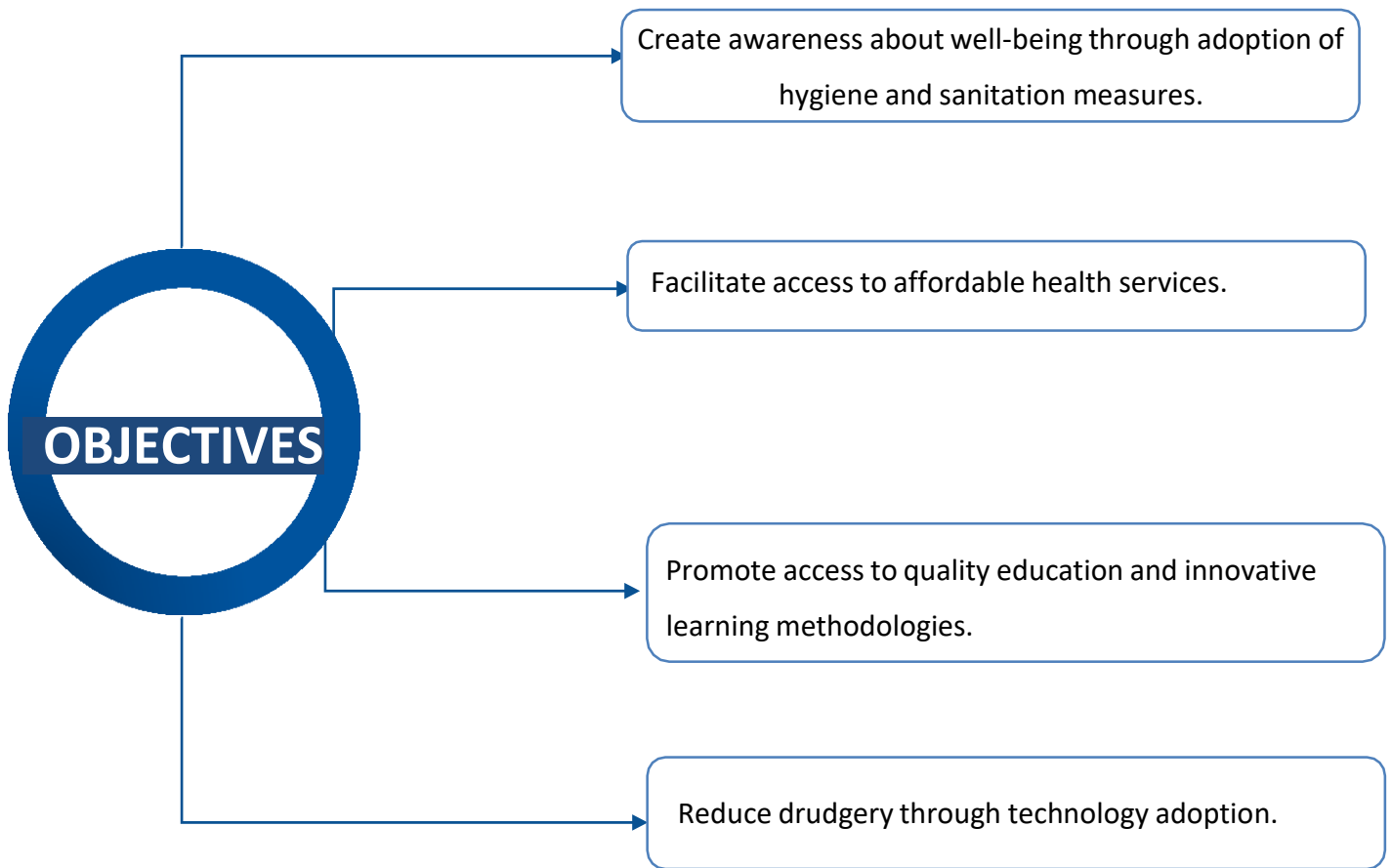
Solar lift system



6. QUALITY OF LIFE

SCOPE

The emphasis under this theme is to synergize efforts to improve overall living standard in each of the villages through inputs in health, hygiene, nutrition, education, literacy, knowledge and awareness. Quality of life activities complement the livelihood generation initiatives and multiply the impact through progression to overall development and well-being.



The focus under this theme is to synergize efforts to improve overall living standard through inputs in health, hygiene, nutrition, education, literacy, knowledge and awareness. Quality of life activities complement the livelihood generation initiatives and multiply the impact through progression to overall development and well-being.

To solve drinking water quality and access issues, hand pumps are being repaired with provision of platform and soak pit. It is also planned to install solar powered drinking water supply systems at 4 locations providing safe drinking water to about 200 households.

To address the issue of ignorance of menstrual health and hygiene among women, extensive awareness sessions are conducted. Establishment of a women SHG run sanitary pad making unit at Sambalpur cluster is a further step in ensuring self-reliance, easy accessibility and livelihood.

Kitchen garden establishment is pursued with the objective of strengthening nutrition intake at the household level. Nutrition charts are shared with the households for easy reference and understanding. During the year, 400 households were covered through this activity.

While health camps were conducted adhering to protocols, a model of community level health resource persons were deployed for providing basic diagnostic services.

KEY FIGURES

2,885 Families covered

40 Villages reached

400 Kitchen gardens

1 Sanitary pad unit established

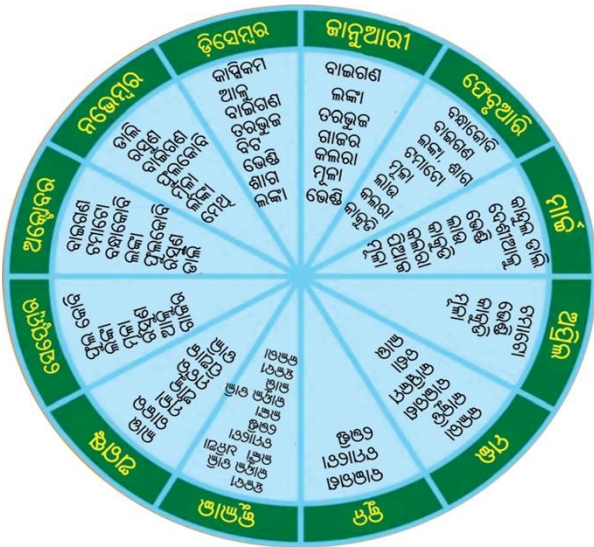


Previous condition



Hand pump platform

“The time is always right to do what is right.” – Martin Luther King Jr.



Nutritional charts



Primary health check-up



Soak pit

Smokeless chullas



CASE OF WOMEN MANAGED SANITARY PAD UNIT: INTEGRATING QUALITY OF LIFE WITH LIVELIHOODS

While promoting menstrual hygiene has been a focus area, it was also felt important to build aspects of sustainability and self-reliance to the initiative for tangible impact. An approach of buying and distributing sanitary pad would have had only short-term benefits. This gave way to the scouting of feasible options. With the coming forward of a women group in Sambalpur, it has been possible to establish a sanitary pad unit at Birsinggad village in Sambalpur cluster of CCDP – *Utthan*. The unit has been received courtesy BASF – Nunhems India Pvt. Ltd. The unit has a capacity of manufacturing 250 pads/napkins and is managed by 07 women from 02 SHG. The group members have learned the complete process of operations through a series of training sessions by overcoming the challenges of the pandemic restrictions. The unit was formally inaugurated on 26 January 2021 by Shri. S.L. Touriya, General Manager – Civil, Mahanadi Coalfields Ltd. in the presence of Shri. Arabinda Sahoo, Asst. Manager – CSR, Mahanadi Coalfields Ltd., BAIF team and the community. The unit by integrating quality of life with livelihoods is an inspiring example of aligning with the Nation’s missions of “Vocal for Local” and “Atmanirbhar Bharat”.



Inauguration of sanitary pad unit

Operational unit



7. RURAL NON-FARM SECTOR

The role of Rural Non-Farm Sector (RNFS) in augmenting livelihoods cannot be overlooked considering fragmented holdings and limited resources. Such village level enterprises are stronger on sustainability front as well as the engagements are productive with forward linkages. The approach followed is that of production at household level and aggregation at the group level thus leveraging both collective strength and individual ownership. Mushroom cultivation and poultry rearing have been initiated and have received encouraging response with a coverage of 402 households over the last two years. The households have been able to add additional income of ₹ 30,000 to ₹ 50,000 with such enterprises.

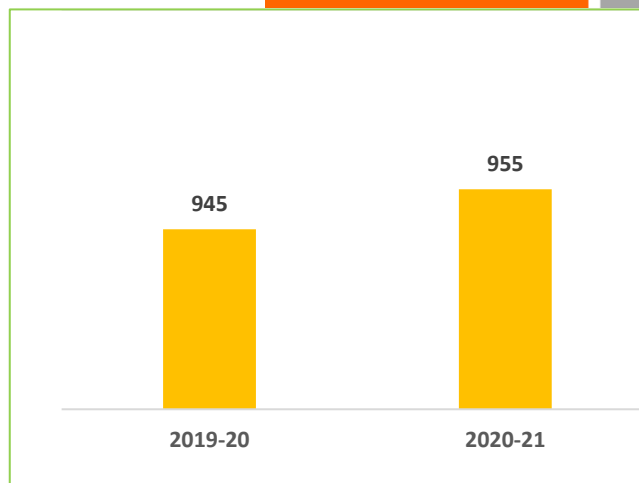


Poultry rearing

Mushroom farming



8. BISLD ODISHA PROGRAMME OUTLAY (₹ in lacs)



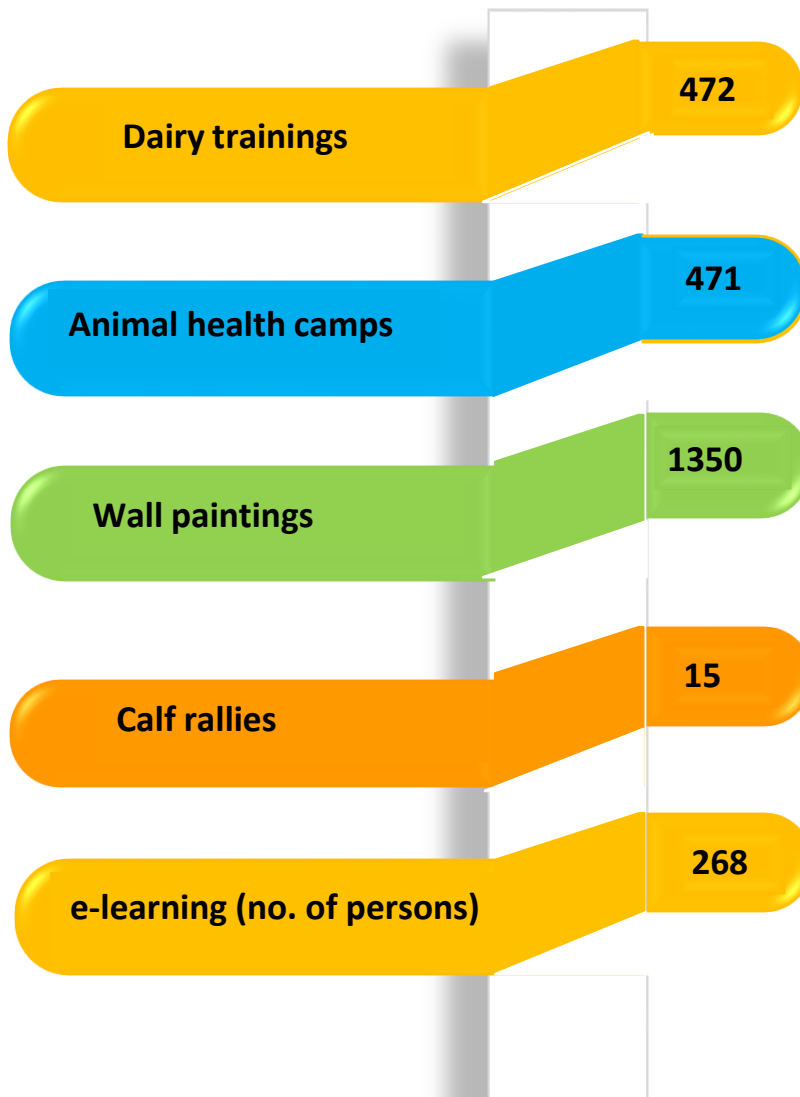
9. PARTNERS IN SUSTAINABLE DEVELOPMENT

No	SPONSOR	COVERAGE	PROGRAMME
1	Odisha Livestock Resources Development Society Department of Fisheries and Animal Resources Development, Govt. of Odisha	Angul, Balangir, Bargarh, Boudh, Cuttack, Jagatsinghpur, Jajpur, Kalahandi, Kendrapara, Koraput, Nabrangpur, Nuapada, Puri, Sambalpur, Subarnapur	Livestock Development: Breeding
2	Mahanadi Coalfields Ltd.	Angul, Jharsuguda, Sambalpur, Sundergarh	Holistic Development
3	NABARD	Balangir, Jagatsinghpur, Kendrapara	Livestock Development: Promotion of Sorted Semen
4	Adani Foundation	Bhadrak	Livestock Development: Integrated services
5	Bill & Melinda Gates Foundation	Angul, Balangir, Bargarh, Sambalpur, Sonepur	Livestock Development: Characterization & performance recording
6	Mahindra and Mahindra Ltd.	Balangir	Water Centric Livelihood
7	Hindustan Unilever Ltd.	Angul, Jharsuguda, Sambalpur, Sundergarh	COVID-19 relief
8	NDDB &OMFED	Angul, Boudh, Dhenkanal	Survey

COLLABORATION FOR RURAL DEVELOPMENT OVER THE YEARS



10. PROMOTION AND EXTENSION





Calf rally



BAIF's stall at an expo



Animal health camp



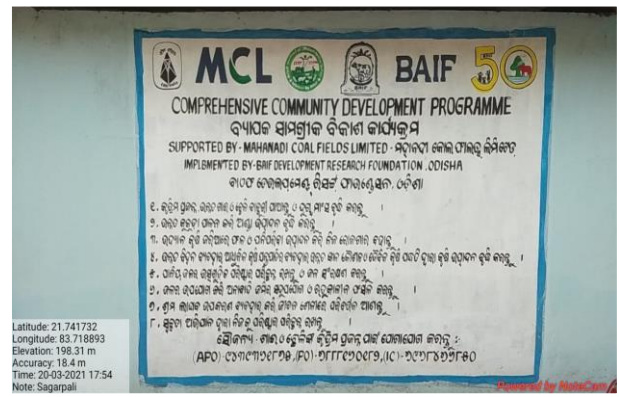
Dairy training



Exposure visit



LDC information display



Wall paintings

11. MONITORING AND VISITS

A robust monitoring system is present to assess and manage project activities. The state level monitoring team, internal monitoring cell along with thematic experts jointly monitor activities on ground. Thematic experts guide the cluster team and provide support required for thematic activities improving results. Teams regularly conduct field visits and review meetings to gauge the effectiveness and impact of engagements at different stages. Result Based Management (RBM) framework is adopted for large projects with multi-activity engagements. A team comprising of the senior management officials also pay visit to the project areas to understand the state and district level progress. Besides, sponsors also visit to review implementation and progress. During the travel restrictions, virtual remote monitoring visits were also adopted for ensuring programme delivery quality.



Visit by MCL officials



Internal monitoring visit

M&F team visit

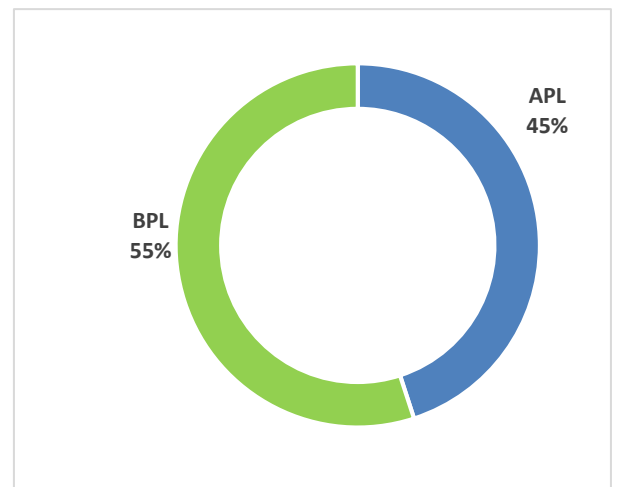


Latitude: 20.792222
 Longitude: 86.950249
 Elevation: 74.84m
 Accuracy: 96.5m
 Time: 09-15-2020 10:01
 Note: M&F cell monitoring visit at D...
 Powered by NoteCam

12. EVENTS AND HIGHLIGHTS

PROGRAM INCLUSIVENESS

The programme has reiterated its emphasis for inclusive coverage by reaching out to the less privileged. This is evident from the coverage of **55%** economically weaker section. Focus is also laid on gender inclusion for sustainable community development. The pandemic has called for digital inclusion and bridge the divide by enabling ease of access. Training sessions have been conducted remotely. Also, participants were provided access to e-learning modules through BAIF’s Learning Management System.



HIGHLIGHTS



June 2020: NABARD supported Sorted Semen Program inaugurated by Shri. Prasanta Muduli, MLA, Jagatsinghpur in Jagatsinghpur, Odisha in the presence of Shri. B.B. Mohanty, District Development Manager-Jagatsinghpur, NABARD, Shri, B. Shivarudrappa, Regional Director, BAIF



July 2020: Presentation of CCDP project activities to CMD, Mahanadi Coalfields Ltd. in the presence of Director (Personal), Director (Technical) & General Manager (CSR).



Latitude: 20.0514
Longitude: 86.080198
Accuracy: 2800.0 m
Time: 01-25-2021 12:33
Note: Appreciation certificate given by RD SIR to miss avilipsa jaisingh Dileep-puri

Powered by NoteCam

Jan 2021: Shri. B. Shivarudrappa, Regional Director felicitating Ms. Avilipsa Jaisingh, CDC I/C of Puri district for outstanding work.



Latitude: 20.290701
Longitude: 85.844969
Elevation: 47.97 m
Accuracy: 17.2 m
Time: 29-01-2021 10:41
Note: goat meeting

Powered by NoteCam

Jan 2021: Meeting with Secretary, Fisheries & ARD Dept., Govt. of Odisha Shri. R. Raghu Prasad, IFS on scientific breeding of goats through artificial insemination.



Latitude: 20.269051
Longitude: 85.829811
Elevation: 65.92 m
Accuracy: 12.9 m
Time: 25-02-2021 10:56
Note: PCC meeting 25.02.21

Powered by NoteCam

Feb. 2021: Coordination Committee meeting of ILDP chaired by Shri. R. Raghu Prasad, IFS, Commissioner cum Secretary, Fisheries and ARD



Latitude: 21.745742
Longitude: 83.719116
Elevation: 196.22±1.6 m
Accuracy: 21.5 m
Time: 19-03-2021 12:08
Note: MCL program

Powered by NoteCam

March 2021: Azadi ka Amrut Mahotsav organized in collaboration with MCL.

MEDIA COVERAGE



The programmes have received high accolades and recognition from the media fraternity of the State and have acclaimed popularity and patronage through local newspaper and media coverage. The programmes have been praised for their livelihood generating activities targeted at income generation, poverty alleviation, improved quality of life and well-being.

13. INSTITUTIONAL LINKAGES

BAIF has been partnering with SBI Foundation in their flagship Youth For India (YFI) programme. The State branch has been hosting YFI Fellows over the last two years for their fellowship journey of 13 months. The Fellows have been instrumental in bringing new ideas and approaches to field implementation for enhanced impact and sustainability. Interns are also being hosted from institutes like IRMA, Xavier School of Sustainability, DMI and CUTM. These internships offer the students a direct exposure to development programmes and the students also contribute to the program with their creativity, innovation, analysis etc.



SBI Fellows and interns with community



“The energy of the mind is the essence of life.” – Aristotle

14. COVID-19 RESPONSE

RELIEF | REVIVAL | RESILIENCE

The unprecedented nation-wide lockdown imposed to control the spread of COVID – 19 has affected all levels of the society. The primacy of lives over livelihoods has tilted the trade-off in favour of the former with the optimism that our collective will and efforts can not only overcome the health challenges posed by the pandemic but also revive the growth trajectory. The exodus of labourers resulting in reverse migration has to a large extent strained the rural economy which otherwise relied on remittances to augment earnings from agriculture and allied vocations. Another section which was severely affected included landless families and daily wage labourers residing in rural or peri-urban areas. The situation thus posed a humanitarian crisis and required concerted support from all sections to supplement the efforts of Union and State Government.

BAIF has been working Govt. and corporate entities. The first line of action was to reach out to the most affected and vulnerable. Imminent need was assessed to provide relief crucial to survival. The immediate measures with support from program funding agencies included distribution of grocery and hygiene kits to the underprivileged families. Hygiene kit was included as it tends to get neglected due to financial crunch & is also not available under subsidy. Households were identified in consultation with Gram Panchayat representatives. District administrations were informed of BAIF’s support to the cause.

Resilience building & coping mechanism are paramount to sustainable development. The principle of *Gram Swaraj* resonates with the nation’s collective resolve of *Atmanirbhar Bharat*. It is pertinent to empower our rural communities & bridge the development divide. BAIF’s rapid survey across its program areas in state records more than 8,000 returnees. Productive engagement in farm, off-farm & non-farm domains with optimal use of resources is the only means to create sustainable livelihoods for these families.

Immediate measures: Relief

- Provided basic necessities to 600 households in 04 districts – Sambalpur, Angul, Jharsuguda & Sundargarh with support from Mahanadi Coalfields Ltd.
- 392 households in Sambalpur & Angul provided grocery kits with support HUL.
- 100 households given grocery & hygiene kits with BAIF staff’s voluntary contribution.
- Identification criteria: Landless, daily wage laborers, migrant workers.
- Coordination with Gram Panchayats.
- Outreach: 1092 households

Immediate measures: Revival of rural economy

- Lockdown has disrupted livelihood avenues both in rural & urban areas. Reverse migration has added to the strain on rural economy. Revival efforts focussed on recreating a vibrant rural ecosystem.
- 280 Self Employed Youths (SEYs) have been providing essential veterinary services under ILD Program supported by Govt. of Odisha, following safety norms across 16 districts thereby earning income as well as ensuring unbroken backend dairy linkage.
- Rural development works covering agriculture, water resources, health are being implemented in 4 clusters enabling over 4000 families with assured livelihoods.

**Long term measures:
Resilience building**

- Resilience building of the community will pave the way for sustainable development considering the far reaching temporal & spatial adverse impact of the pandemic.
- Safe working being fundamental to organizational principles, all SEYs working at grassroots level & interacting with the community have been provided face masks & sanitizers. Safe working protocols are strictly adhered to at all levels.
- Field level staff in the State have been covered under group life insurance of ₹ 10 lacs for financial security.
- Holistic development initiatives are being pursued in 4 clusters with an aim to cover 8000 families with sustainable livelihoods & income augmentation.



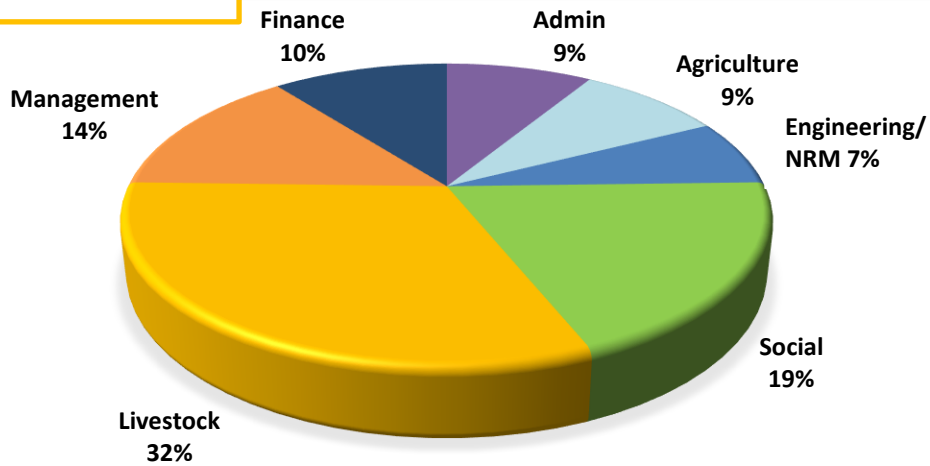
Precautionary measures & social distancing was ensured during relief measures. Close coordination with local self-government bodies was followed for inclusion & equity.



“The greatest glory is not in never failing but in rising up after every failure.” – R.W. Emerson

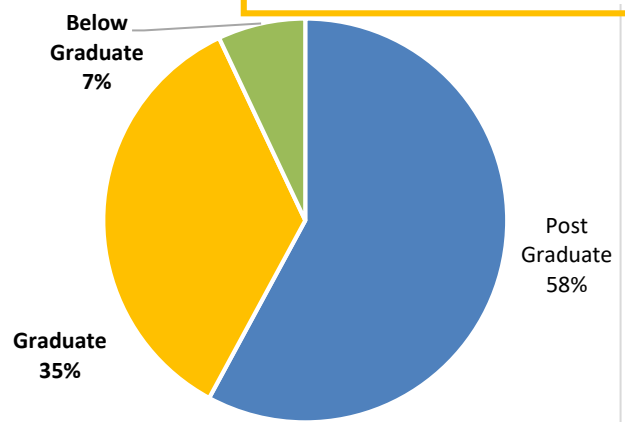
15. HUMAN RESOURCE

FUNCTIONAL EXPERTISE



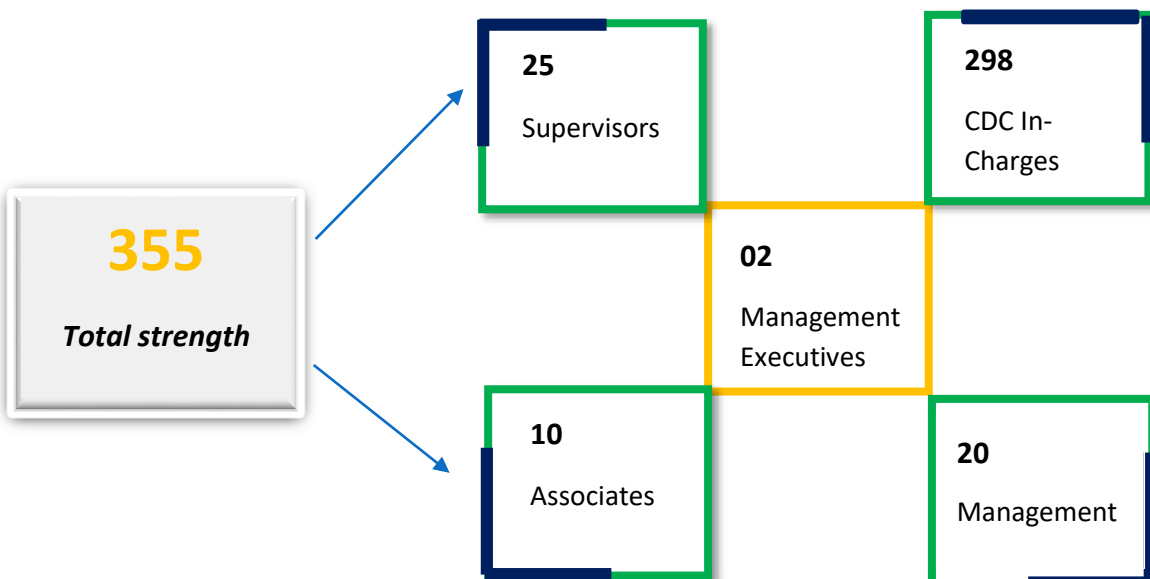
*Excludes Cattle Development Centre In-Charges (CDC)

EDUCATIONAL BACKGROUND



*Excludes Cattle Development Centre In-Charges (CDC)

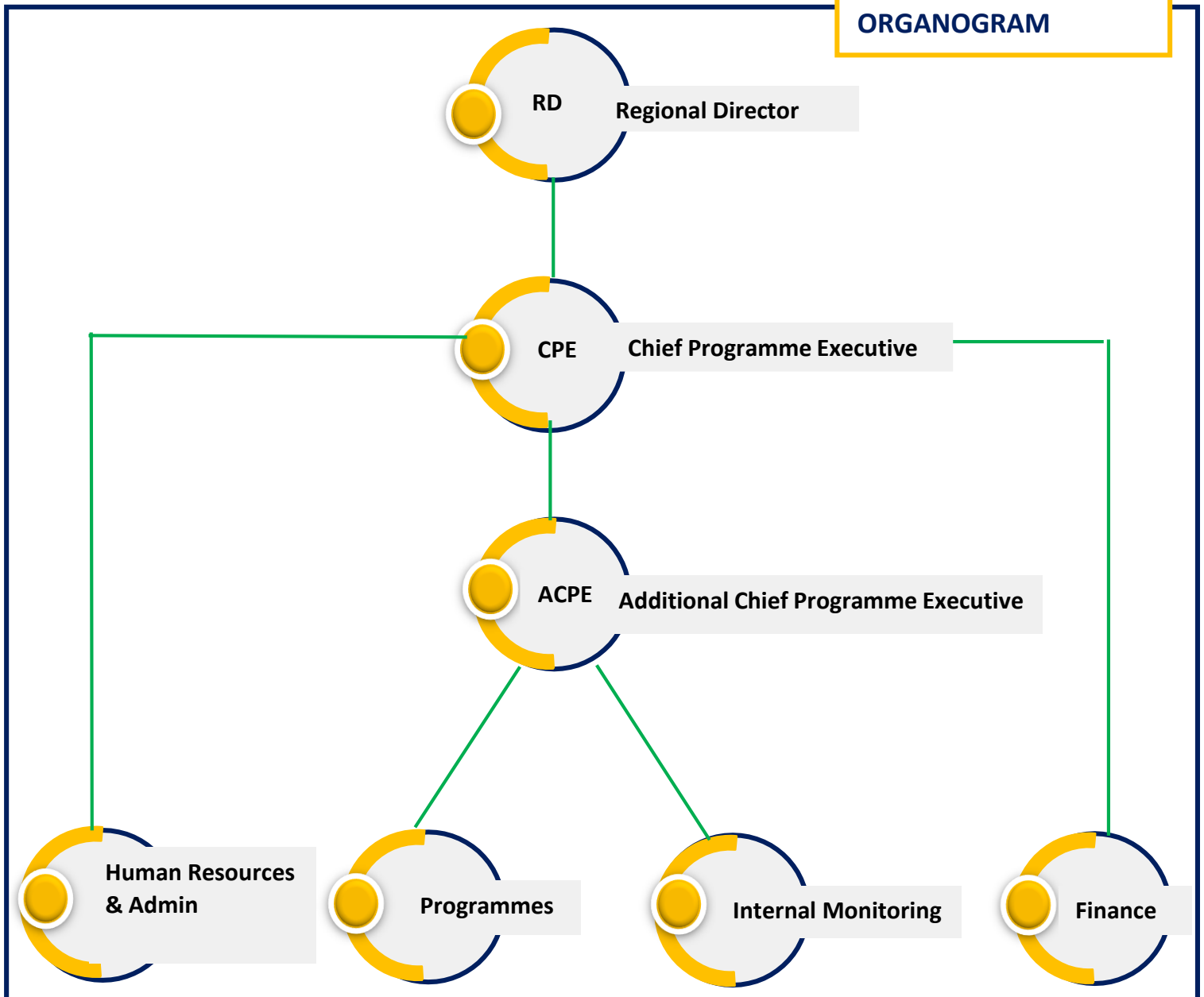
TEAM COMPOSITION



TEAM CAPACITY BUILDING SESSIONS

Theme	Sessions (No.)	Participants (No.)
Agriculture	04	53
Communication	01	25
Finance	01	08
HR	01	01
Information and Communication Technology	02	22
Livestock	05	72
Natural Resources Management	02	32
Quality of life	01	04
Documentation	02	21
Program Management	08	44

ORGANOGRAM



BAIF OFFICES AND ASSOCIATES

Head Office

BAIF Development Research Foundation
BAIF Bhawan, Dr. Manibhai Desai Nagar, Warje
Pune – 411 058, Maharashtra
Phone: +91-20-25231661-9
Email: baif@baif.org.in

Administrative Office

BAIF Development Research Foundation
E-1, First Floor, DDA Market, MOR land, New Rajendra
Nagar, New Delhi – 110 060
Phone: +91-11-28741031
Email: baifdelhi@baif.org.in

Research Facilities

BAIF Central Research Station and Semen Freezing Facility

Urulikanchan, Pune – 412 202, Maharashtra
Phone: +91-20-26926248
Email: crsbaif@baif.org.in

BAIF Semen Freezing Laboratory

Dharouli, Jind – 126 113, Haryana
Phone: +91-1686-268563
Email: baifjind@baif.org.in

BAIF Associate Organizations

Vasundhara Agri-Horti Producer Co. Ltd. (VAPCOL)

Dr. Manibhai Desai Nagar, Warje
Pune – 411 058, Maharashtra
Phone: +91-20-252315414
Email: vapcolpune@gmail.com

BAIF Agro and Biotechnology Pvt. Ltd. (BABTPL)

Dr. Manibhai Desai Nagar, Warje
Pune – 411 058, Maharashtra
Phone: +91-20-252315414
Email: babtplpune@gmail.com

BAIF Institute for Sustainable Livelihoods and Development (BISLD), Head Office: Pune

Northern Region

BISLD Uttar Pradesh

27-A, Tagore Town
A.C. Banarjee Road
Prayagraj – 211 002, UP
Phone: +91-7052221122
Email: bisld.up@baif.org.in

BISLD Rajasthan

BAIF Bhawan, G Block, Near
Community Hall
Hiran Magri, Sector 14
Udaipur – 313 002, Rajasthan
Phone: +91-294-2640133
Email: bisld.rajasthan@baif.org.in

BISLD Uttarakhand

Natthanpur Ring Road, Mussoorie
bypass (Jogiwala)
PO. Nehrugram
Dehradun – 248 005, Uttarakhand
Phone: +91-135-3566165
Email: bisld.uttarakhand@baif.org.in

Southern Region

BISLD Telangana

House No: 17-1-382/SN/22
Srinivasa Nagar Colony, Near Sports Club
Champapet, Hyderabad – 500 059,
Telangana
Email: bisld.telangana@baif.org.in

BISLD Karnataka

'Kamadhenu', PB. No. 3
Sharada Nagar
Tiptur - 572 202, Karnataka
Phone: +91-8134-250658
Email: bisld.karnataka@baif.org.in

BISLD Andhra Pradesh

House No: 23-1185, Vishnu Kundi
Nagar, Vinukonda
Guntur – 522 647, Andhra Pradesh
Phone: +91-8712945595
Email: bisld.ap@baif.org.in

BISLD Bihar

House No.2, Road No. 8
East Patel Nagar
Patna – 800 023, Bihar
Phone: +91-612-2292486
Email: bisld.bihar@baif.org.in

BISLD Odisha

L4, Saraswati Enclave
Opp. City Station, Sarla, Post Dhankauda
Sambalpur – 768 006, Odisha
Phone: +91-7894418530
Email: bisld.odisha@baif.org.in

BISLD Jharkhand

House No. 400 B, Rd No. 4C
Ashok Nagar, PS. Argora
Ranchi – 834 002, Jharkhand
Email: bisld.jharkhand@baif.org.in

Western Region

BISLD Maharashtra

BAIF-MITTRA Bhavan, Opp. Nivas Homes, Behind Bodhale Nagar
Nashik-Pune Road, Nashik – 422011, Maharashtra
Phone: +91-253-2416057
Email: bisld.maharashtra@baif.org.in

BISLD Gujarat (Central)

3rd Floor, Indra Complex
Near Amarjyot Society, Manjalpur,
Vadodara – 390 004, Gujarat
Phone: +91-265-2651802
Email: bisld.gujarat@baif.org.in

BISLD Gujarat (South)

Village Lacchakadi, PO. Gangpur, Tal Vansda
Navsari – 396580, Gujarat
Phone: +91-2630-244096
Email: bisld.gujarat@baif.org.in

BISLD Madhya Pradesh

E7/226, 1st Floor, Bharat Nagar Road
near Dhanvantri Complex, Area Colony
Bhopal – 462016, Madhya Pradesh
Phone: +91-755-2561580
Email: bisld.mp@baif.org.in

APPEAL

BAIF has been committed to sustainable rural development for over five decades of its operations. BAIF's valuable contributions to improving livelihoods of rural households have been recognized in various national and international platforms. Our innovative models and participatory community empowerment approaches have shown pathways to holistic development which have been adopted outside the Organization as well for replication. The hallmark of these models is integration of livelihood and quality of life resulting in enhanced living standards.

BAIF is recognized by the Ministry of Finance, Govt. of India u/s 35 (1) (ii) of the Income Tax Act 1961 for Scientific Research. Contributions made to BAIF for carrying out research and development activities will be eligible for exemption from income tax. BISLD is a Charitable Institution under the provisions of Section 12A (2) of the Income Tax Act, 1961. Donations made to BISLD will be eligible for benefit of deduction under Section 80G of the Income Tax Act, 1961.

We appeal to the donors to contribute to the maximum extent for the noble cause of empowering rural communities and in the process building a self-reliant, progressive and prosperous India.

ACKNOWLEDGEMENTS

The dedication and perseverance of team members – our core strength have been the cornerstone of BAIF's impactful programmes. The generous support from our esteemed partners and sponsors is gratefully acknowledged which has enabled us to enhance outreach and impact. The valuable guidance from senior management provides deep insights into both strategic and operational aspects of the programme. Last but not the least, the cooperation and trust from the communities we work with is gratefully acknowledged without which the programmes would have just remained as activities.

TRIBUTES

While the State branch has been fortunate to avoid COVID fatalities, the valuable contributions of pan BAIF team members who lost their lives are being gratefully acknowledged. The relentless dedication of Shri. Anoop Kumar Sinha, former Regional Director of East Region, towards the Organization, Community and particularly the valuable guidance in strategic orientation of the region's programmes will be remembered forever. Shri. Sinha left for his heavenly abode on 01 May 2021 after putting up a valiant fight against COVID. The State team pays respectful tributes to all members of BAIF family who are not with us anymore. We pray to the Almighty for salvation of the departed souls and seek solace in the realization that while mortals depart, their good deeds are eternal.

**MANAGEMENT COMMITTEE: BISLD
ODISHA**

1. Mr. B. Shivarudrappa
Chairperson
2. Mr. R.K. Warriar
Secretary
3. Mr. G. P. Sahu
Member
4. Mr. Suraj Kumar
Member
5. Mr. Bipin Sahu
Member
6. Ms. Manisha Sahu
Member
7. Invitee
8. Invitee
9. Invitee

INTERNAL COMMITTEE: BISLD ODISHA

1. Ms. Manisha Sahu
Presiding Officer
2. Ms. Smitarani Pattnaik
Secretary
3. Ms. Nanda Munda
Member
4. Mr. G. P. Sahu
Member
5. Mr. Suraj Kumar
Member
6. Mr. A. Chandrashekhar Rao
Member
7. Ms. Aathira Krishnan
Member
8. Mr. Pankaj Singh
Member
9. Ms. Bani Mahapatra
External Expert

INTERNAL AUDITOR

Ajay Agarwal & Co.
Chartered Accountants
Sambalpur, Odisha

STATUTORY AUDITOR

Ranjit Singh & Associates
Chartered Accountants
Ranchi, Jharkhand

ANNUAL REPORT DESIGN

Mr. Jayan Nair
Sr. Project Officer

Ms. Aathira Krishnan
Sr. Project Officer



BAIF Institute for Sustainable Livelihoods and Development



L4, Saraswati Enclave, Opp. City Station, Sarla
PO Dhankauda, Sambalpur-768006, Odisha
Email: bisld.odisha@baif.org.in
Tel.: +91 7894418530